



# Liquid Cooling MTBK Outdoor Energy Storage System



## Safety

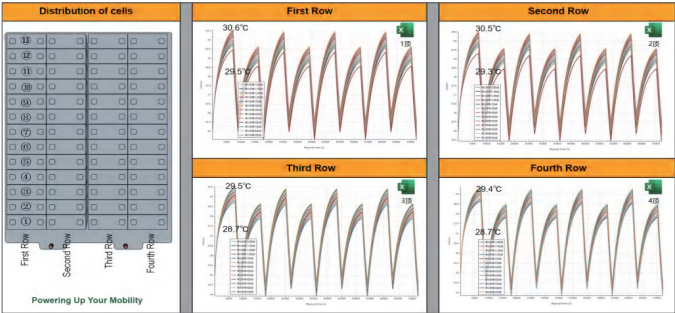
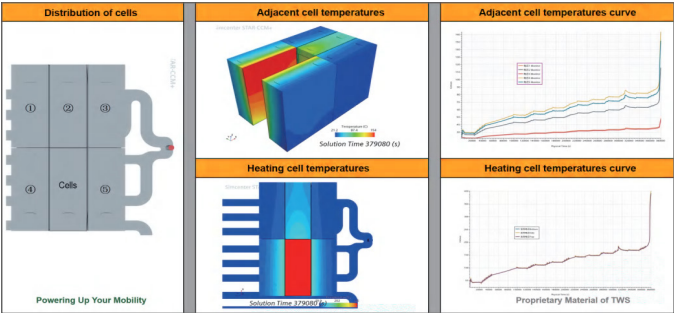
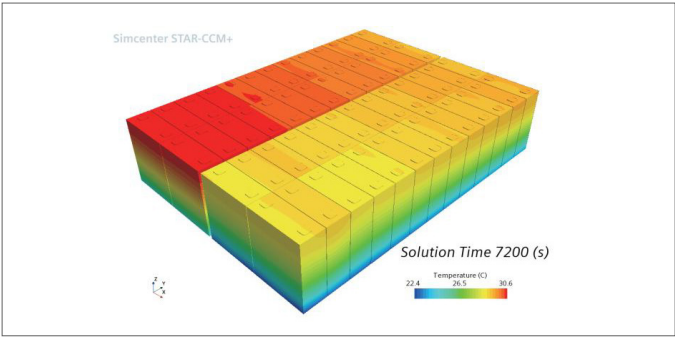
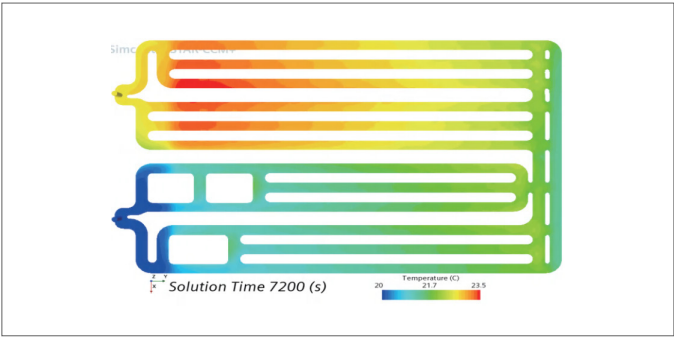
- Active early warning and multiple electrical protection functions;
- Cell cycling up to 10,000 cycles;
- Fire warning function, automatic fire extinguishing alarm function;
- High protection level, adaptable to various extreme environments;
- The system has high energy density and saves land area.



## Economical and High Efficiency

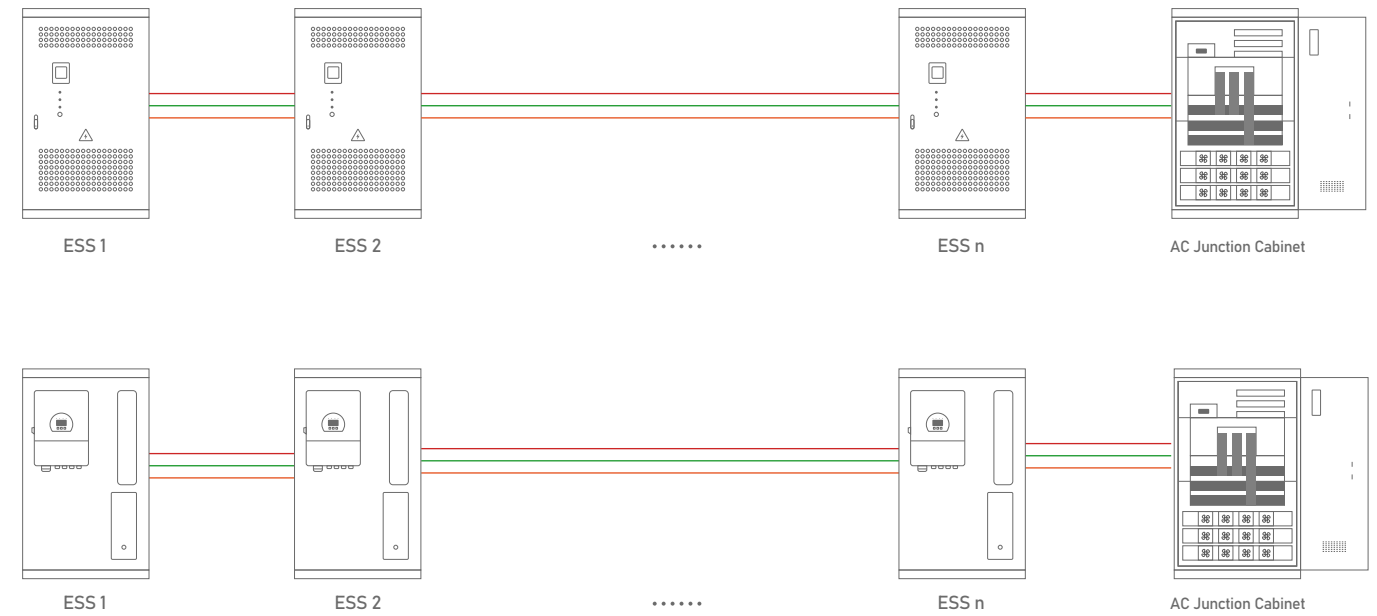
- Integrated design, high system integration, and the system comes with equipment-level EMS, which can monitor equipment status in real time;
- Outdoor cabinet design and flexible combination, suitable for a variety of application scenarios;
- Pre-installed design, convenient transportation and installation, quickly shortening the construction period.

# Product Features



The liquid cooling pipelines are non-uniformly distributed, effectively reducing the temperature difference between the cells in the battery pack and ensuring that the temperature difference between the cells in the entire pack is  $\leq 2^{\circ}\text{C}$ .

# Diversified Configuration



## MTBK Series



MODULE	MTBK100-215-LC	MTBK200-372-LC
Battery		
Battery Type	LiFePO4	
Rated Charge/Discharge Performance	0.5C/1C	
Nominal Voltage [V]	768	1331.2
Operating Voltage Range [V]	672~876	1164.8~1497.6
Cell Rated Capacity [Ah]	280	280
Nominal Capacity [kwh]	215.04	372.73
Composition	1P240S	1P416S
AC Output (On Grid)		
Rated Output Power [kw]	100	200
Max. Output Current [A]	159	167
Rated Grid Voltage [V]	3/N/PE, 230/400	3/PE, 690
Rated Grid Frequency [Hz]	50/60	
Power Factor	>0.99	
Power Factor Adjustable Range	0.9 (leading)~0.9 (lagging)	
DC Component	< 0.5% In	
THDi	<3% (@rated power)	
AC Output (Off Grid)		
Rated Output Power [kw]	100	/
Max. Output Current [A]	159	/
Rated Output Voltage [V]	3/N/PE, 230/400	/
Rated Output Frequency [Hz]	50/60	/
Unbalanced Load Capacity	100%	/
General Data		
Ingress Protection	IP54	
Battery Cooling Method	Liquid cooling system	
Fire Fighting System	Yes	
Relative Humidity	0~95%, non-condensing	
Temp. Range [°C]	-20~+50	
Altitude [m]	5000 (>1000 derating)	
Communication	RS485/CAN	
Communication Protocol	Modbus/IEC104	
Weight [kg]	2200	3500
Dimension (W*D*H) [mm]	1400×1400×2200	1400×1300×2350
Delivery Method	Integral transportation	

# Application Scenarios

## Electricity Saving

Peak-Load Shifting.



Factory



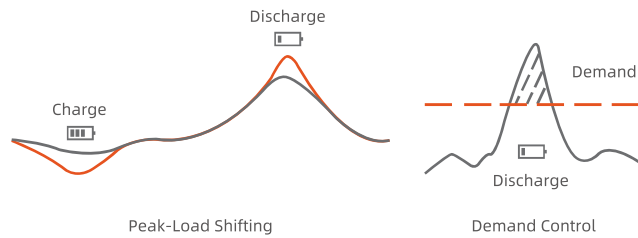
Office Block



Data Center



Charging Station



## Power Expansion

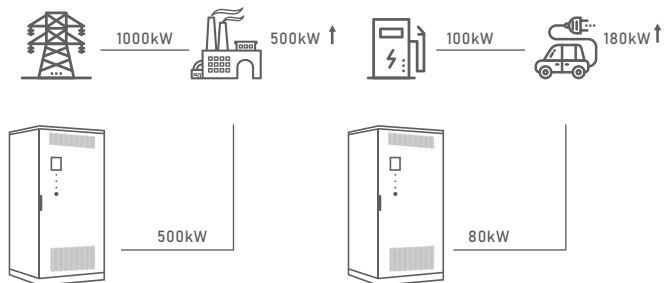
Discharge when the distribution capacity cannot meet the load demand to achieve the effect of virtual capacity expansion.



Factory



Charging Station



## Backup Power Supply

Discharge when the distribution capacity cannot meet the load demand to achieve the effect of virtual capacity expansion.



Factory



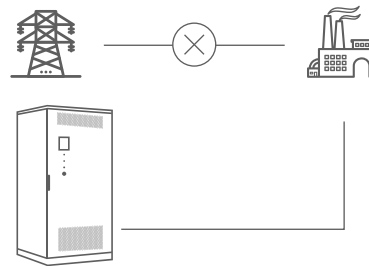
Office Block



Shopping Mall



Hotel



## Demand Response

Enable power grid dispatching, Entitle dispatching subsidies.



Factory



Office Block



Shopping Mall

